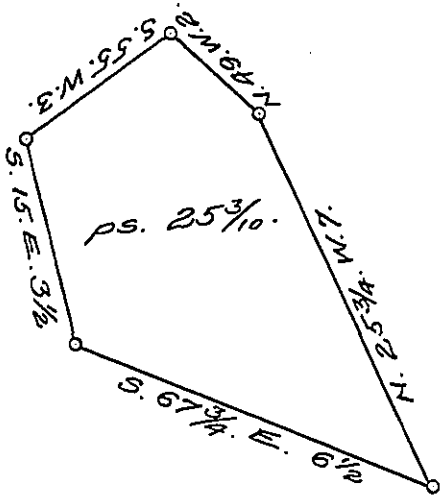


York County shore



Lancaster County Shore

A Draught of Beach Rock Island situate in the river Susquehanna in Donegal township Lancaster County Opposite to lands of John B. Haldeman on the Lancaster side and near the head of Bald Eagle Island and opposite an Island of Henry B. Grull on the York side. Containing twenty five perches & three tenths Strict Measure Surveyed in pursuance of a warrant dated the 17<sup>th</sup> day of October A.D. 1815 granted to Henry Haldeman.

p<sup>c</sup> Jacob Hibshman D.S.

To Jacob Spangler Esquire }  
 Surveyor General }

IN TESTIMONY that the above is a copy of the original remaining on file in the Department of Internal Affairs of Pennsylvania, made conformably to an Act of Assembly approved the 16th day of February 1833, I have hereunto set my hand and caused the Seal of said Department to be affixed at Harrisburg, this thirteenth day of January 1908.

*Henry Howard*  
 Secretary of Internal Affairs.